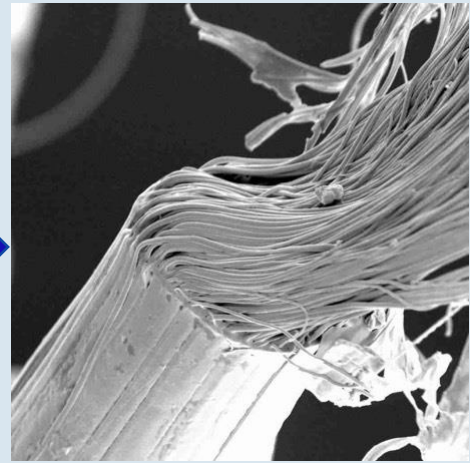
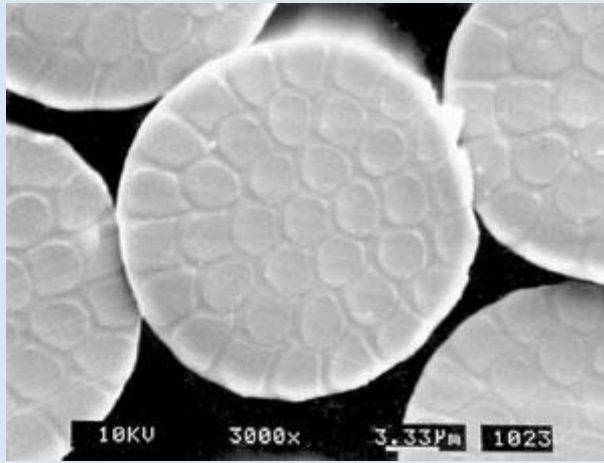


A woman with dark hair is shown from the chest up, wearing a white button-down shirt. Her face and hair are partially obscured by thick, vibrant brushstrokes in shades of red, pink, and teal. She is looking upwards and to the right with a slight smile. The background is a plain, light grey.

 **Tepar**

MATRIX

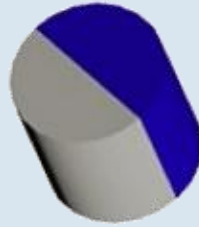
BICOMPONENT YARNS



Sheath-Core



Island-in-the-Sea



Side-by-Side



Layer-by-Layer



Segmented Pie

Bi-component yarns are a continuous filament formed by bi-component technology that extrudes two Chemistries, within the same filament, from the same spinneret. These yarns offer advantages to single component technology since it accommodates fiber constructions tailored for more specific functions. Fiber attributes include anti-static, antimicrobial, super hydrophilic, super hydrophobic, stain resist, low melt and heat resistant. Yarns can be POY, FOY, as well as self-texturing.

Sea & Island (COPET/PET)

Split by alkali weight reduction

→dpf: 0.06, 0.10

Reduction Split (COPET/PET)

Split by alkali weight reduction

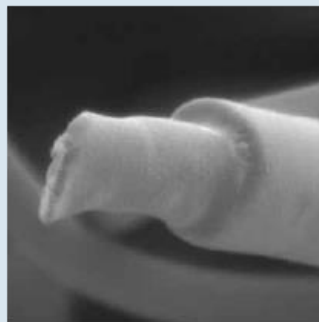
→dpf: 0.16, 0.27

Mechanical Split (PA/PET)

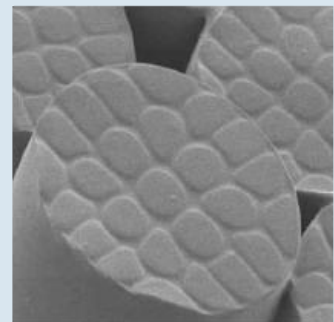
Split by sanding process

→dpf: 0.16, 0.27

Sheath Core



Islands of the Sea



Concentric



Logo



Fiber Varieties:

Core & Sheath



50/50



20/80



Eccentric



Trilobal



Conductive

Side by Side



50/50 20/80



Mixed Viscosity



ABA



Trilobal or Others



Conductive

Tipped



Trilobal



Cross

Micro-Denier



Segmented



Island in Sea



Striped

Mixed Fibers



Colors



Deniers, Components



Cross-sections



Bi-component/
Homopolimer

Denier

40 to 3600

dPf

0.1 to 50

Cross Section

Round



Trilobal



Ribbon



Sheath-Core



Bow Tie



Hollow



Channeled



Islands in Sea



Others

Luster

Dull

Semi-dull

Bright

Chemistries

PET

Nylon 6

Nylon 6,6

PPT

Others

Additives

Stain Resistance

Antimicrobial

Flame Resistance

UV

Color

Universal Color Palette

Custom Color Available

Dye Method

Solution Dyed

Natural (for piece or yarn dye)

Different Shrinkage DTY

TYPE	SPECIFICATION	CHARACTERISTICS
16 splitMF	105/60	With Reduction,
Sea & Island MF	16i 60/36, 105/36, 105/36CD, 110/36Black 37i 80/36, 105/36, 165/36, 225/84	High Density, Bulky, Soft, Suede-Like
Multi Filament	35/60, 35/108, 50/84, 65/156, 85/156, 85/228, 105/84, 105/156, 130/48, 150/156, 155/162, 175/162, 190/90	Without Reduction, High Density, <u>Bulky</u> , <u>Soft</u> , Suede-Like

Conjugate DTY

TYPE	SPECIFICATION	CHARACTERISTICS
PA/PET 16spMF	80/32, 80/32/2	Soft Touch Excellent Wipe Effect Suede-Like
COPET/PET MF	16sp 80/48	
	16i 75/24, Dope Black 75/24	
	37i 50/24, 75/24	



Tepar Tekstil Sanayi ve Ticaret A.Ş.

Hadımköy Mahallesi, Celal Bayar Caddesi, No1

Arnavutköy 34555 İstanbul, Turkey

Tel: +90-212-7710338

Fax: +90-212-7710348

E-Mail: tepar@tepar.com

Web: www.tepar.com

Certification



Tepar polymers meet Oeko-Tex Standard 100 for textile products of all types which pose no risk whatsoever to health.